



GRAFTON

INTEGRATED HEALTH NETWORK



Partnering with individuals, families, and communities to deliver measurable results for children, adolescents and adults with autism, intellectual disabilities, and complex mental health challenges.



Grafton Integrated Health Network is a multi-state behavioral health care organization serving infants, young children, adolescents and adults with complex behavioral health challenges.

Our multidisciplinary team includes an extensive continuum of clinical, medical and academic specialists — including physicians, nurses, teachers, therapists, speech therapists, occupational therapists, applied behavior analysts, and direct service professionals. We collaborate with communities, families and other health care organizations to provide the best possible care and achieve improved outcomes.

Our philosophy is one of comfort versus control, helping clients thrive in the least restrictive environment consistent with achieving the best outcome. Our trauma-informed approach provides a supportive, caring environment sensitive to clients' past struggles and experiences.



“I can call any time I know I need to get an answer or find out some information. I know that at various levels of the organization, I can also reach out to them, because they've got an interest in (my son).”

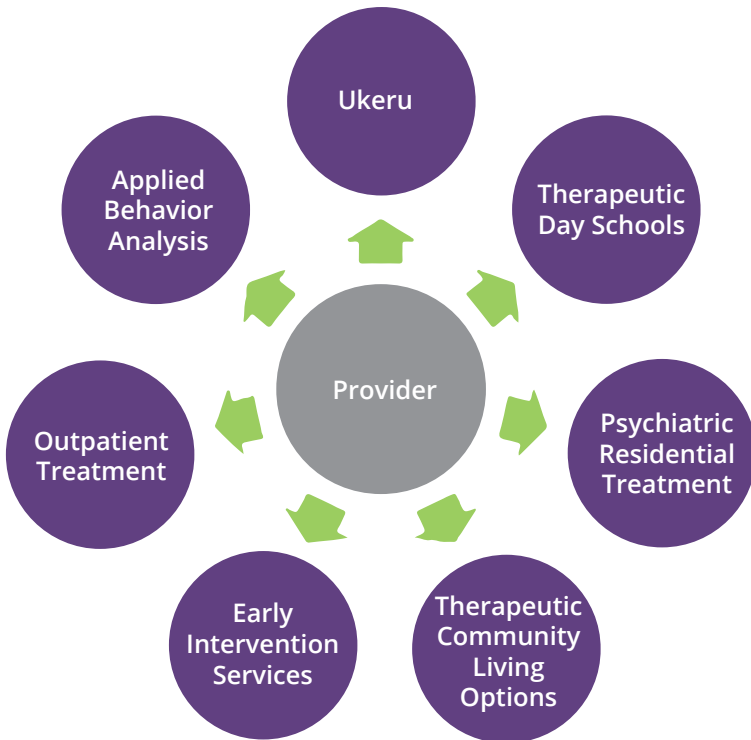
— GRAFTON PARENT

OUR APPROACH

Grafton's approach is person-centered, trauma-sensitive and data-driven, with each plan of care as unique as the individual it serves. With 60 years of clinical experience and evidence-based data in behavioral health and intellectual/developmental disabilities, Grafton is uniquely qualified to deliver improved outcomes.

WHAT WE OFFER

Grafton provides an integrated continuum of care — from short-term stabilization and residential services to outpatient, educational and career and technical training — helping clients thrive in a variety of settings.



WHO WE SERVE

Grafton welcomes the opportunity to work with and, based on clearly determined indicators, is successful with the most at-risk and vulnerable populations. We serve males and females ages six - 22 with intellectual and developmental disabilities, mental health challenges and other co-occurring diagnoses. We are proud to be at the forefront of supporting individuals on the autism spectrum, having worked with this population throughout the past six decades.

Frequent referral behaviors include:

- Disruption
- Elopement (Bolting)
- Lack of Safety Awareness
- Physical Aggression Towards Others
- Property Destruction
- Self-injurious Behavior
- Sexually Maladaptive Behaviors
- Significant Psychological Impairment
- Threats of Harm

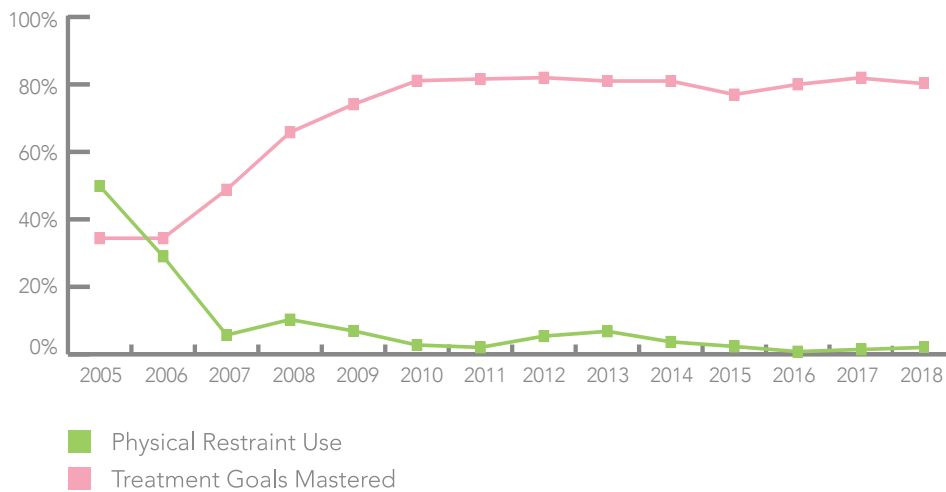
Our objective is for each individual we serve to function to his or her best ability in any environment to which he or she is exposed.



GRAFTON INNOVATIONS

Well over a decade ago, Grafton implemented an organization-wide initiative to minimize and, where possible, eliminate the use of coercive techniques, such as restraint and seclusion. Today, not only have we achieved a 99.8% reduction in the use of restraint and completely eliminated the use of seclusion, we have dramatically reduced the number of injuries to clients and staff. Through our Ukeru Systems® division (www.ukerusystems.com) — currently used in nearly 30 states and more than 130 private day and residential programs, private and public schools, psychiatric hospitals and forensic units — Grafton now shares this expertise with other organizations.

Grafton has successfully implemented a formal goal-mastery initiative that seeks to assure objectives established for each individual are clearly defined, meaningful, and measurable. Our structured and sustainable system identifies, monitors, and evaluates client progress and embeds data-based decision-making into cross-disciplinary planning and treatment. Since Grafton's goal mastery initiative was implemented, Grafton has consistently achieved a high rate of goal mastery as depicted in the graph below.



“We truly look at each client as an individual. We look at their past and what they have been through. And we take that information and we remember it every time we interact with them.”

– TONY SANDERS, GRAFTON

GRAFTON HISTORY

1958

Grafton was founded by Ruth Birch to serve her son and others with learning disabilities in 1958 and was incorporated in 1960

1973

Became the first residential educational program for individuals with Autism in Virginia

1981

Opened first therapeutic community living option for adolescents with Autism

Completed first official statewide study of Autism in Virginia, since lauded as one of the best state studies in the nation

1989

Opened Richmond facility

1994

Opened second educational facility in Winchester

2002

Opened Medicaid-approved psychiatric residential treatment center in Berryville

2005

Received CARF accreditation

2007

Recognized by the International Mental Health Leadership as one of only four North American providers to exemplify best practice in treatment of individuals with complex disabilities

2008

Won Negley President's Award for excellence in risk management practices

2010

Partnered with city of Winchester Department of Social Services to provide early intervention services to the Shenandoah Valley

2013

Began delivering Ukeru training and consultation both nationally and internationally

2015

Launched Ukeru Systems, a division of Grafton offering trauma-informed, restraint-free crisis management training

2015

Rolled out ProEventa goal mastery software

2017

Grafton was awarded the opportunity to partner with Loudoun County, Virginia to operate and staff the Loudoun County Youth Shelter Program

2018

Ukeru Systems was used in 30 states and more than 130 private day and residential programs, private and public schools, psychiatric hospitals and forensic units

2019

Grafton is celebrating its 60th anniversary

To make a referral, please call us at **888-955-5205** or use the referral form located in the upper right corner of our website.

GRAFTON LOCATIONS:

Corporate Office

P.O. Box 2500
Winchester, VA 22604

Phone: 888-955-5205

Berryville

180 Grafton Lane
Berryville, VA 22611

Phone: 540-955-2400

Loudoun County Youth Shelter

16450 Meadowview Court
Leesburg, VA 20175

Phone: 703-771-5300

Richmond

4100 Price Club Boulevard
Midlothian, VA 23112

Phone: 804-674-8888

Winchester

120 Bellview Avenue
Winchester, VA 22601

Phone: 540-542-0200

Infant & Toddler Connection of Shenandoah Valley

3150 Shawnee Drive
Winchester, VA 22601

Phone: 540-635-2452

Website: www.itcshenvalley.org

Ukeru Systems

3150 Shawnee Drive
Winchester, VA 22601

Phone: 540-542-0200 Ext 6412

Website: www.ukerusystems.com

RECOGNITION

Grafton's minimization of restraints initiative has been recognized by:



ACCREDITATION

Grafton's therapeutic community living options are accredited by:



Grafton Programs Awarded
Three-Year Accreditation



LICENSING

Grafton's therapeutic community living options are licensed by:



MEMBERSHIP



Visit www.grafton.org to learn more
And be sure to follow us:

www.facebook.com/GraftonNetwork/

@GraftonNetwork

Grafton Integrated Health Network